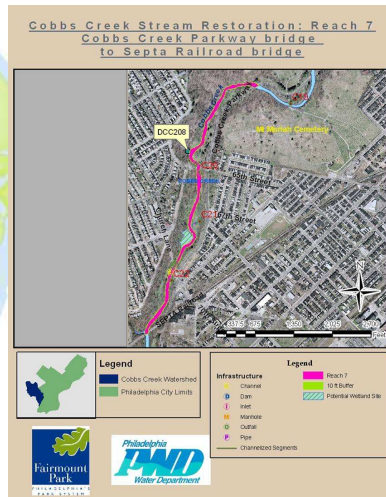


Cobbs Creek Parkway Bridge to Septa RR Bridge - Reach 7

Restoration Project

Darby-Cobbs Watershed



Contact: Erik Haniman
215-685-4877
Erik.Haniman@phila.gov

Status: Proposed-Short Term

Cobbs Creek Parkway Bridge to Septa RR Bridge - Reach 7...

The proposed restoration reach begins where Cobbs Creek flows west under Cobbs Creek Parkway directly below Mt. Moriah cemetery and extends over 5,000 feet downstream to the Septa Railroad Bridge. Due to urbanization, the stream experiences a flashy hydrologic regime. Stream restoration using NSCD principles has been proposed for the reach of Cobbs Creek Parkway bridge to the Septa Railroad Bridge. Wetland creation and restoration is also suggested. The current erosive condition of the stream can be contributed to flashy stormwater flows. Wetlands can retain storm flows and thereby reduce peak flows downstream. Lastly, an invasive species removal is necessary to allow for the recolonization by more diverse, native plant and animal species.

Benefits:

- Creation and enhancement of approximately 0.75 acres of wetland area
- Storm flow reduction and storage for the main channel of Cobbs Creek
- Clearing of dense growths of invasive species
- Improved habitat heterogeneity
- Reduced erosion and sediment load
- Enhanced aquatic and riparian habitat
- Improved biological and ecological stability

Clean Water.....
Green City
www.phillyriverinfo.org

