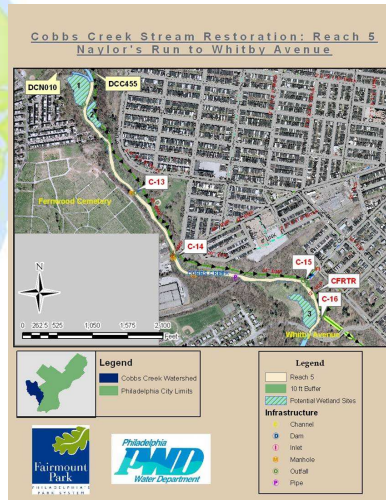


Cobbs Creek Stream Restoration: Naylor's Run to Whitby Avenue - Reach 5

Restoration Project



Darby-Cobbs Watershed



Contact: Erik Haniman
215-685-4877
Erik.Haniman@phila.gov

Status: Proposed-Short Term

Cobbs Creek Stream Restoration: Naylor's Run to Whitby Avenue - Reach 5...

The proposed restoration reach begins at the confluence of Naylor's Run with Cobbs Creek and extends over 6,000 feet downstream to Whitby Avenue. Cobbs Creek experiences a hydrologic regime where the ratio of bankfull flow to baseflow far exceeds the considered normal ratio of 10:1. Stream restoration using NSCD principles and sewer interceptor relining have been proposed for the reach of Naylor's Run to Whitby Avenue. The stream channel will be designed to accommodate a range of flows by constructing a low flow channel within a larger high flow channel. Also, creation of a wetland would help retain stormflows, reduce peak flows downstream, and improve water quality as well as increase aesthetics.

Benefits:

- Creation and enhancement of approximately 4.6 acres of wetland area
- Storm flow reduction and storage for the main channel of Cobbs Creek
- Clearing of dense growths of invasive species
- Improved habitat heterogeneity
- Reduced erosion and sediment load
- Enhanced aquatic and riparian habitat
- Improved biological and ecological stability

