

# Installation of Tide Gates at Overflow Weirs

## Infrastructure Project

## Delaware Watershed



**Contact:** Marc Cammarata  
215.685.4948  
marc.cammarata@phila.gov

**Status:** Monitoring

### Partners:

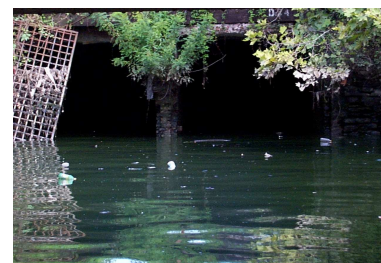
Philadelphia Water Department

### Installation of Tide Gates at Overflow Weirs...

Emergency overflow weirs at CSO regulators are designed to prevent flooding of upstream trunk sewer systems during tide gate malfunction. During extreme high tides, flow reversals may occur across these weirs resulting in an inflow of river water to the CSO regulator chamber and combined sewer system. To free up capacity taken by this flow during high tide periods, the PWD installed tide gates at CSO regulators with low-lying emergency overflow weirs. These gates protect all openings up to an elevation of 1.5 ft on the City Datum, significantly higher than extreme high tides. This project was completed in June of 1999 and resulted in significant inflow reductions.

### Benefits:

- Reduces the volume and frequency of river water flowing into the combined sewer system
- Preserves the capacity of the sewer system so that it is available when needed



Clean Water.....  
Green City  
www.phillyriverinfo.org

