

Tide Gate Replacement at Somerset Street CSO

Infrastructure Project

Delaware Watershed



Contact: Marc Cammarata
215.685.4948
marc.cammarata@phila.gov

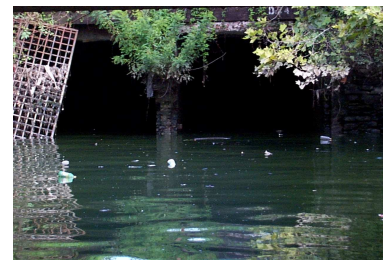
Status: Monitoring

Partners:

Philadelphia Water Department

Tide Gate Replacement at Somerset Street CSO...

During extreme high tides inflow into the trunk sewer can occur. During these events, significant quantities of additional flow can be conveyed to the treatment plant and thus reduce capacity for storm flow, as well as increasing treatment costs. To free up capacity taken by this flow during high tide periods, the PWD installed or replaced tide gates at CSO regulators with low-lying overflow weirs. These gates protect all openings up to an elevation of 1.5 ft on the City Datum, significantly higher than extreme high tides. This project replaced an existing tide gate, D25, at Somerset St. Work was completed in July of 2001 and resulted in significant inflow reductions.



Benefits:

- Reduces the volume and frequency of river water flowing into the combined sewer system
- Preserves the capacity of the sewer system so that it is available when needed for storm flow



Clean Water.....
Green City
www.phillyriverinfo.org

